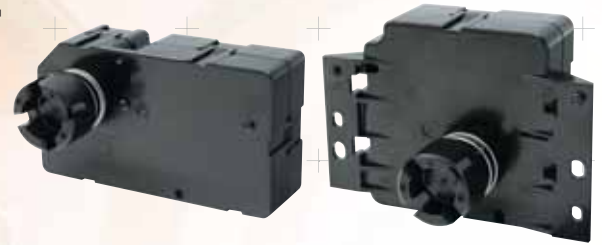


**Thoughtful and low-burden compact design to the environment. New structure for highly precision angle detection.**



● **Environmentally friendly product**

Complied with RoHS & halogen free.

● **Low noise design**

- In driving of rated load
  - Limiting the noise under 45dB for low speed type(Rated Rotation 1.5r/min above)
  - Limiting the noise under 50dB for high speed type(Rated Rotation 4.3r/min above)

● **Capability of output angle detection signal**

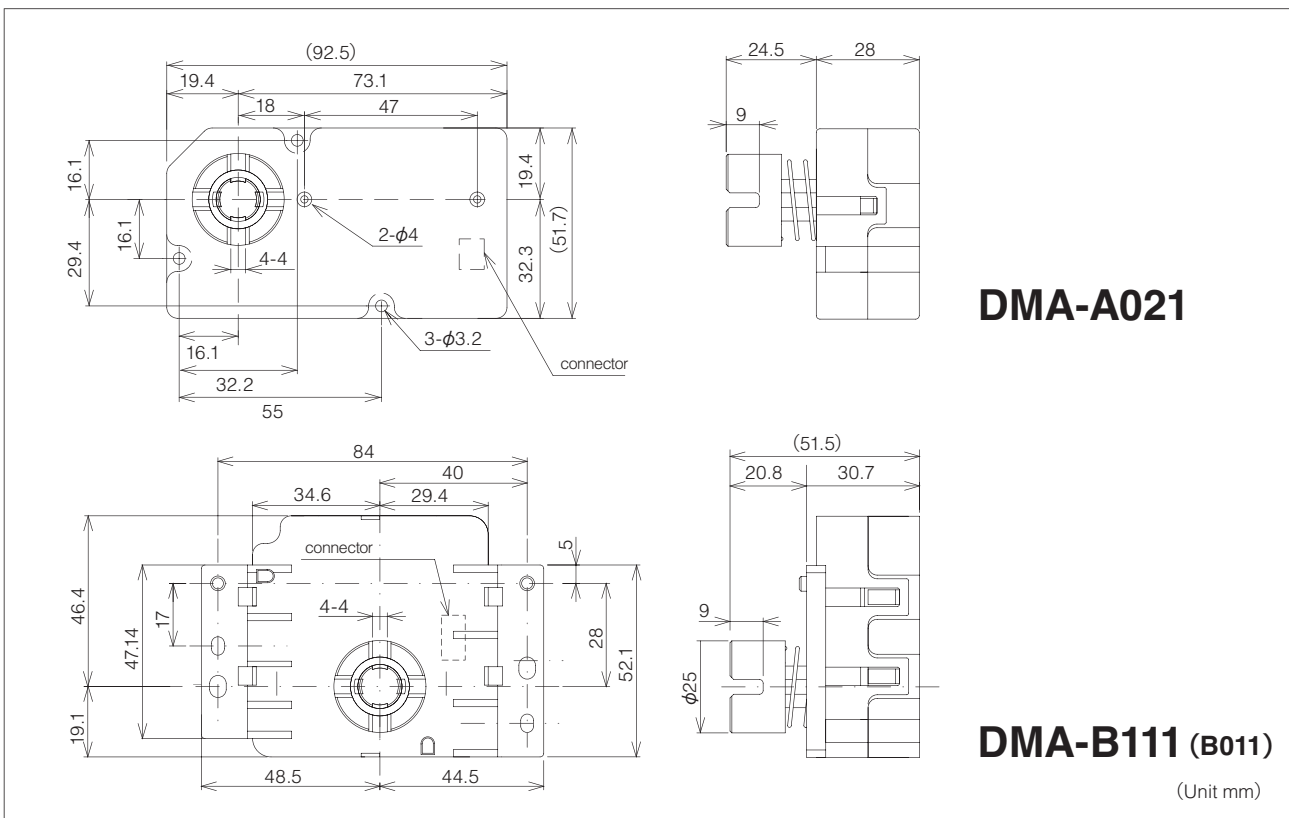
Only DMA-B111 type is capable to give an angle detection signal for the usage of indications. (e.g. quantity of paper in the paper feed cassette.)

● **UL-CSA complied products**

International standards UL-CSA complied materials are used in our parts e.g. coil, lead wire, ..etc. They are able to assemble in export finished goods without modification.

● **Internal supply in China**

Lead time and delivery cost are reduced remarkably due to internal supply by our factory in Guang Dong Province, China.



Type	DMA-A021	DMA-B111 (B011)
Rated Voltage	DC24V	
Rated Torque	2.0N·m	
Rated Rotation	Above 4.3r/min	Above 1.5r/min
Rated Load Current	Below 450mA	Below 150mA
No Load Rotation	6.0rpm±10%	3.5rpm±10%
No Load Current	Below 45mA	Below 30mA
Restraint Torque	Above 3.0Nm	
Restraint Current	Below 800mA	Below 450mA

**Application** Paper feeder tray lifting for copy machine, printer ejector tray driving for copy machine, printer toner stirring for copy machine, printer.