

113107 E



# CV Series



**ABOUT  
USING  
WATER**

## HP Check Valves



# INOXIHP

COMPONENTS AND SYSTEMS FOR HIGH PRESSURE WATER

COMPANY WITH QUALITY MANAGEMENT  
SYSTEM CERTIFIED BY DNV  
= ISO 9001:2008 =

## General features

- High pressure check valves.
- High reliability for heavy and continuous duties.
- Metal to metal seal.
- Construction in-line GAS threaded (LFG version) in-line cartridge (CST version), in-line interflanged, 90° cartridge (CFE version)

## Technical data

• Fluid	Water and HFA
• Working pressure	315 ÷ 750
• Ambient temperature	+2°C ÷ +60°C
• Calibrated spring	0,5 bar
• Materials	Stainless steel

## Accessories

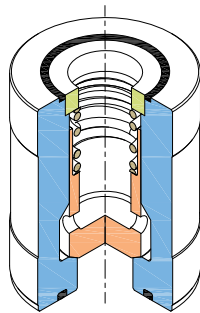
The valves can be equipped with:

- ANSI or CETOP flanges kit

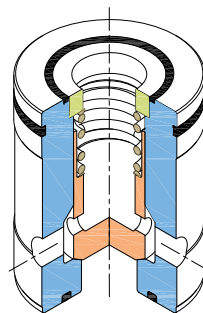
## Options

- Calibrated spring up to 4 bar or no spring version
- VHP version (up to 2000 bar)

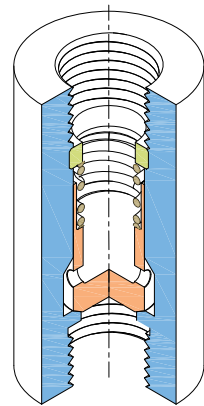
CV-CST  
In-line cartridge



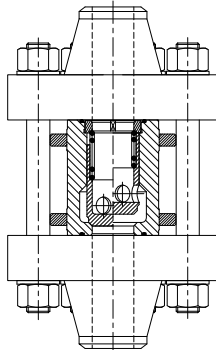
CV-CFE  
90° cartridge



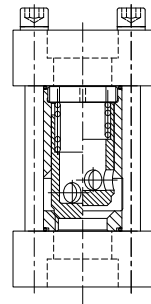
CV-LFG  
up to size 08



ANSI  
Flanges



CETOP  
Flanges



## Valves Sizes

INOXHP	DN	inches	PN
03	15	1/2"	750
04	20	3/4"	750
05	25	1"	500
06	32	1 1/4"	500
07	40	1 1/2"	400
08	50	2"	400
09	65	2 1/2"	350
10	80	3"	350
11	100	4"	350
12	125	5"	350
13	150	6"	315
14	200	8"	315

1 bar = 14.5 psi



## Selection Diagram

